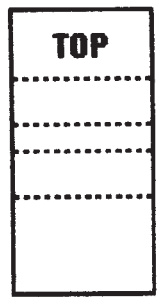
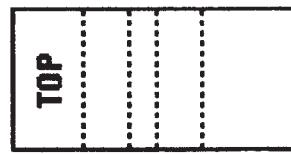


# START HERE!

- COLOR IT FIRST, THEN BUILD IT.
- DASHED LINES (---) INDICATE FOLDS.
- THE NUMBERS BELOW REFER TO THE NUMBERED DRAWINGS AT LEFT.

CUT OUT  
(STEPS) →



**1** CUT OUT THE TWO MAIN PIECES. ONE CUTOUT WILL BE THE FLOOR OF THE TRAILER AND THE OTHER WILL BE THE WALLS AND ROOF.

**2** FOLD DOWN ALL OF THE EIGHT FLAPS AND BOTH OF THE LONG WALLS.

**3** BEND (DON'T CREASE) A TRAILER END DOWN UNTIL IT IS IN PLACE. PICTURE (A) SHOWS IT HALFWAY IN PLACE. NOTE THE FLAPS GO INSIDE THE LONG WALLS. MAKE SURE IT ALL FITS OKAY, THEN GLUE IT, ONE FLAP AT A TIME. THE TINY TRIANGLES SHOULD BE LINED UP CAREFULLY, AS SHOWN IN (B). DO THE OTHER END THE SAME WAY.

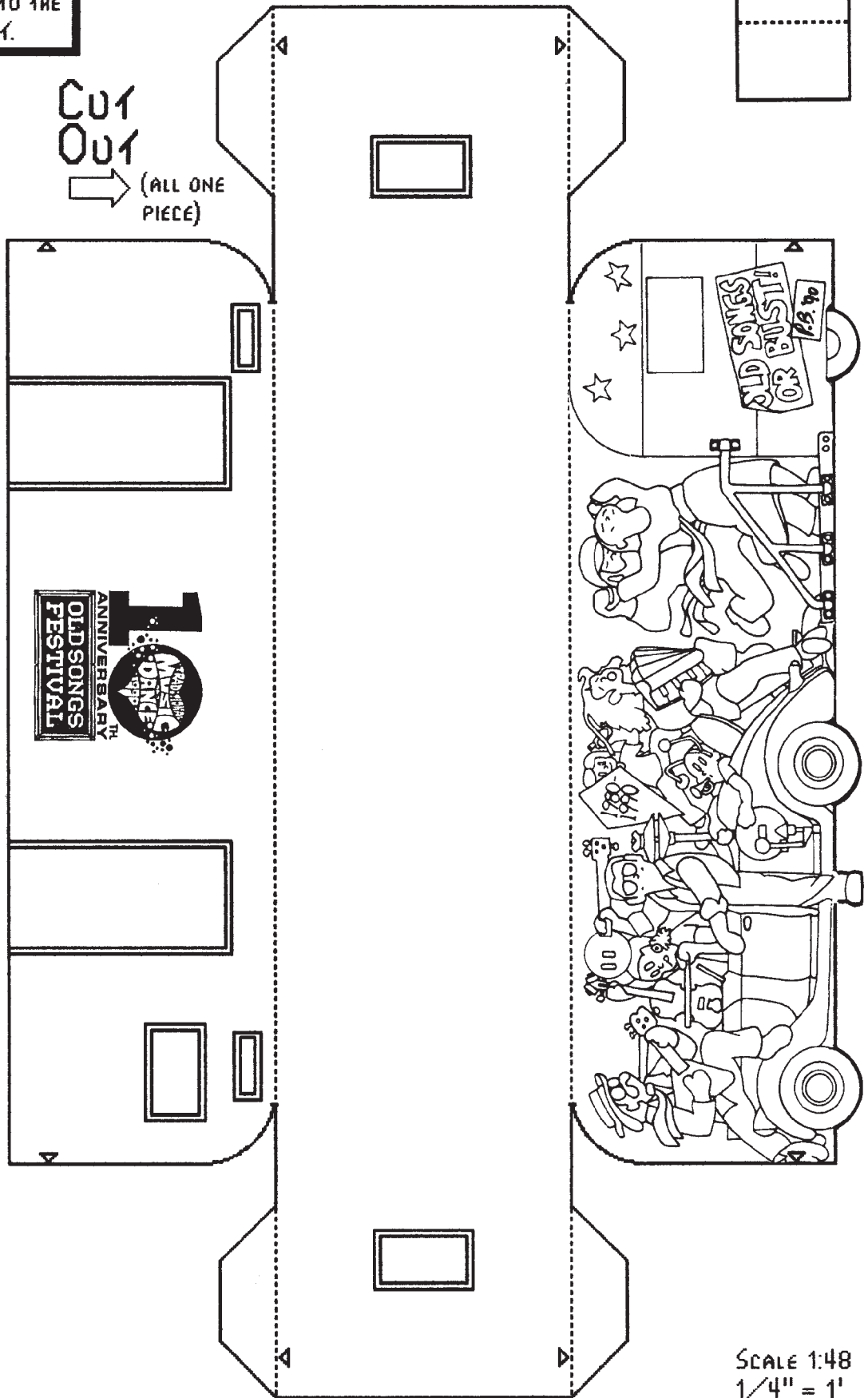
**IF ANY WRINKLES NEED SMOOTHING OR FLAPS NEED MORE GLUING, DO IT NOW BEFORE THE FLOOR IS IN.**

**4** SLIDE THE FLOOR UP INTO THE TRAILER, WITH THE FLOOR FLAPS STILL FOLDED DOWN. STOP WHEN THE BOTTOMS OF THE FLAPS ARE EVEN WITH THE BOTTOMS OF THE WALLS.

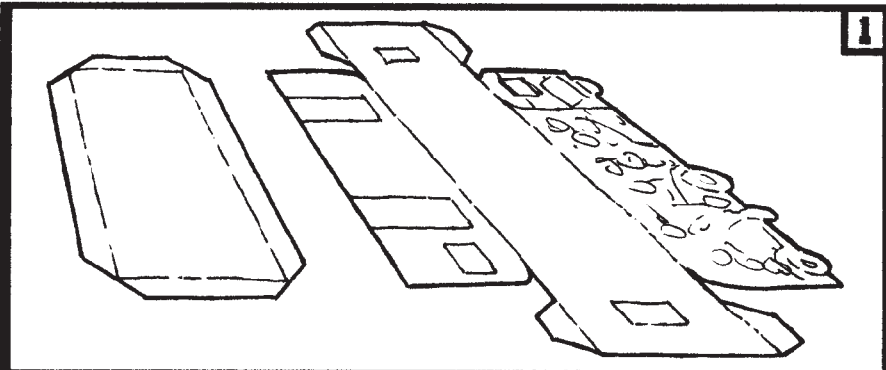
**5** THIS PICTURE IS A VIEW FROM THE BOTTOM OF HOW FAR UP THE FLOOR SHOULD GO. MAKE SURE IT FITS OKAY, THEN CAREFULLY GLUE THE FLAPS IN PLACE.

**6** CUT OUT THE STEPS, FOLD, AND GLUE, SO THAT THEY LOOK LIKE LITTLE BENCHES AS SHOWN. THEN GLUE THE BACKS UP BEHIND THE DOORS SO THE STEPS STICK OUT LIKE REAL STEPS DO.

CUT OUT  
(ALL ONE PIECE) →



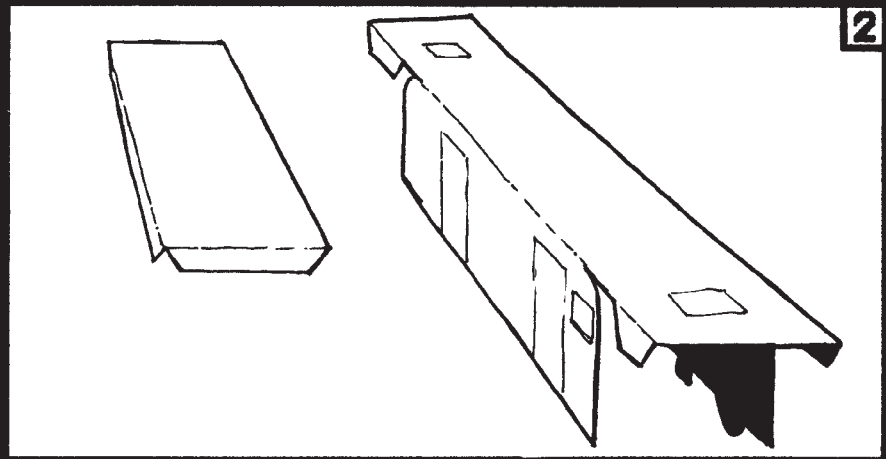
SCALE 1:48  
1/4" = 1'



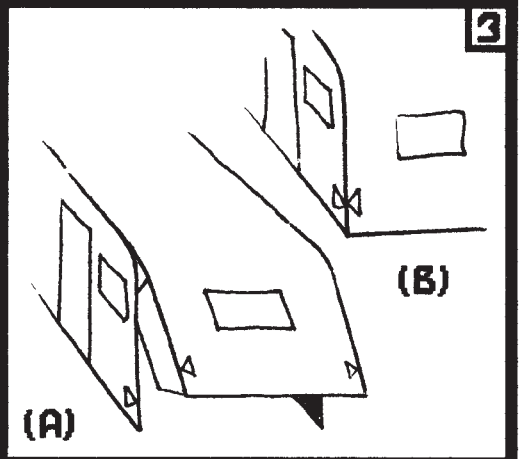
1

1990 OLD SONGS FESTIVAL OF  
TRADITIONAL MUSIC AND DANCE  
OFFICIAL DECENNIAL DRESSING  
ROOM TRAILER MODEL AND  
MINIATURE MURAL MOCKUP FOR  
COLORS, GLUE, AND SCISSORS.

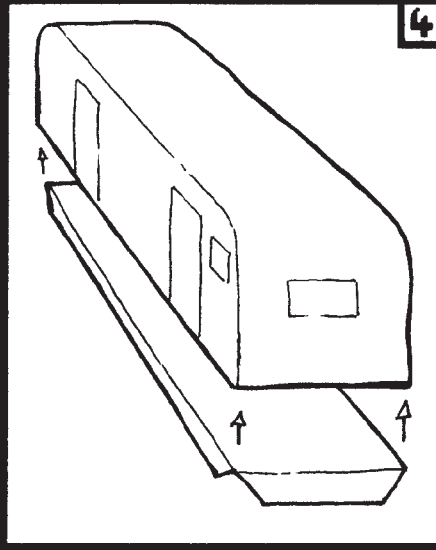
©1990 L&P BERRYMAN



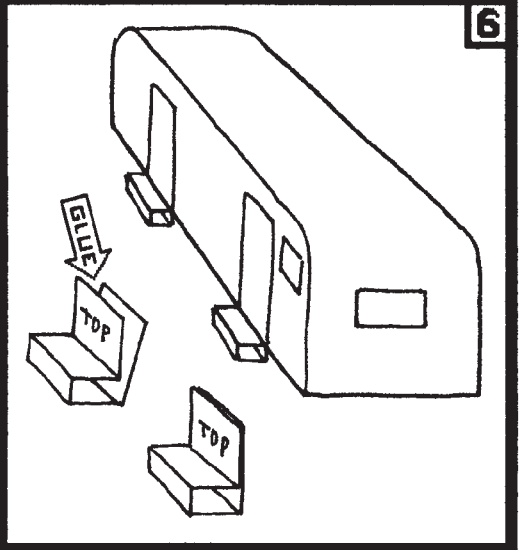
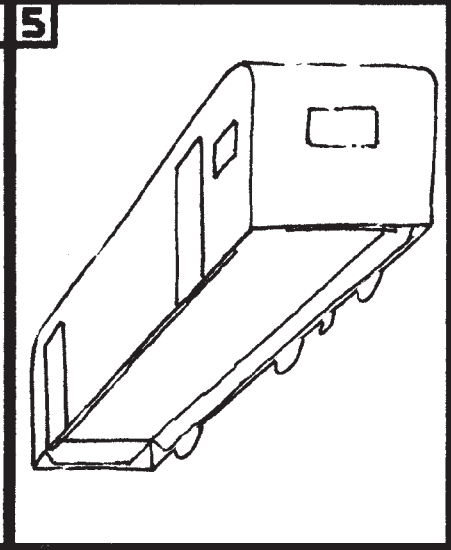
2



3

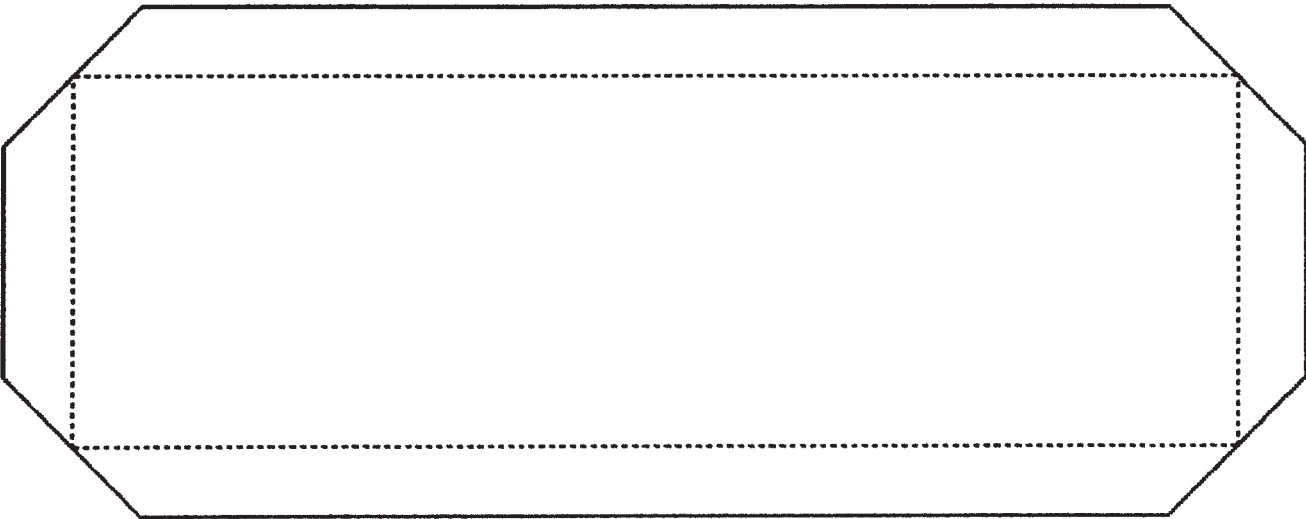


4 5



6

I  
N  
S  
T  
R  
U  
C  
T  
I  
O  
N  
S



CUT  
OUT  
←